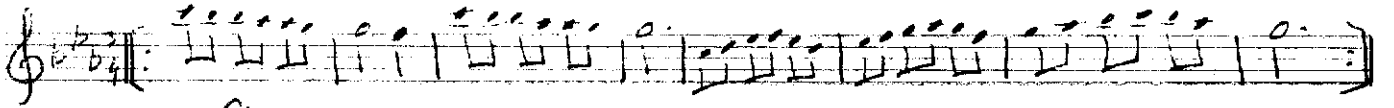


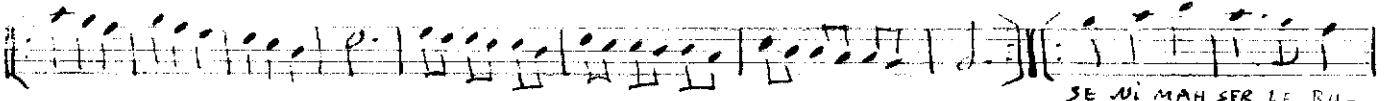
W. Semâi

KÜRDİLİNİCİZKAR

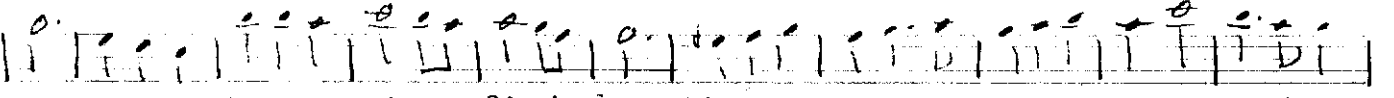
Fohti Karameş, andig.



Giriş.....



SE Nİ MAHŞER LE RU-



LUP

HESAP

JOR-DU-

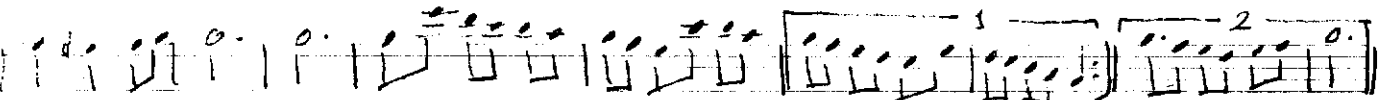
RA-CA-GİM

YA-KAN-DA

TIR-NAL-A-RİM

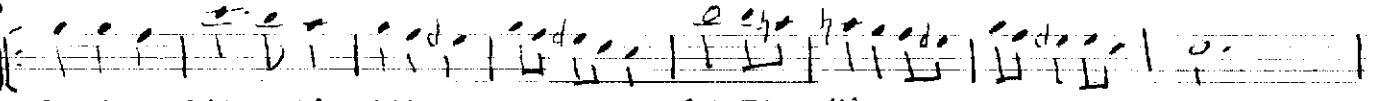
SA-LA-RİN

SA-LA-RİN



SA Â-HİM VAR

SUZ...

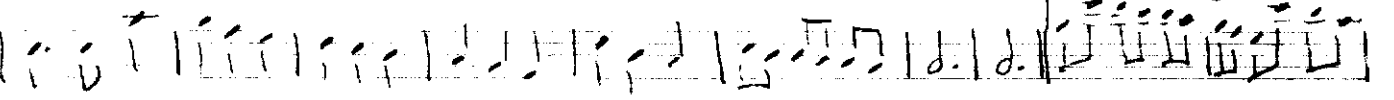


RE-Nİ YOL-DAN ÇI-KA-RAN

ŞEY-TA-NA I-ŞIK TU-TAN

NE KA-DAR ZA-LİM OL-SAN

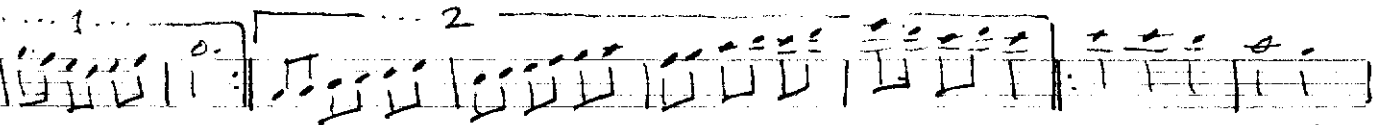
HİÇ GE-LİR AR-TIK BA-NA



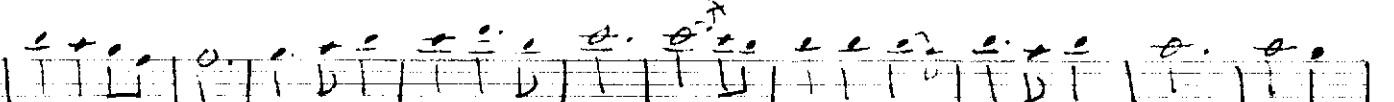
GÜZ-LE-RİN DE BEDDU-AM
ZULMÜ NE LARŞI SE-NİN

Öİ-LİN DE SÜ-NA-HİM VAR
BENİM DE AL-LA-HİM VAR

SUZ...

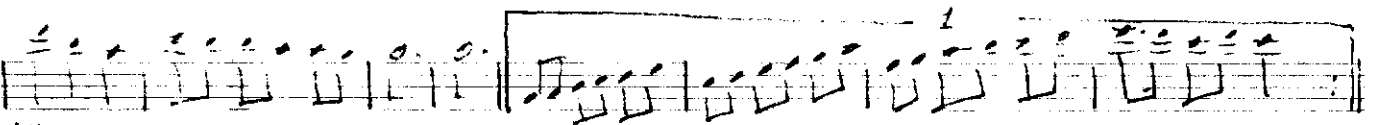


NE YAPTIM SANKİ



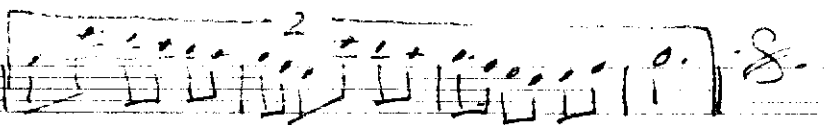
SÖY-LE SÖYLE NE YAPTIM SA-NA

ATEŞ-TİM SEV-Gİ-DO-LU



KİM OLUYU YA-NA-YA-NA

SUZ...



SENİ MAHİŞERDE BULUP HESAP JORDIARACIM
YAKANDA TIRNAKLARIM SALLARINDA ÂNİM VAR
BENİ YOLDAN FİMARAN ŞEYTANA İZİK TITAN
GÜLLERİNDE BEDDUÂM DÜİNDE SÜNÂHİM VAR

NE YAPTIM SANKİ SÖYLE SÖYLE NE YAPTIM SANA
ATEŞTİM SEVGİ DOLU KİL OLUYU YANA YANA
NE KADAR ZÂLİM OLSAN HİÇ DEĞİR ARTIK BANA
GÜLMÜDE NARŞI SENİN BENİM DE ALÂHİM VAR